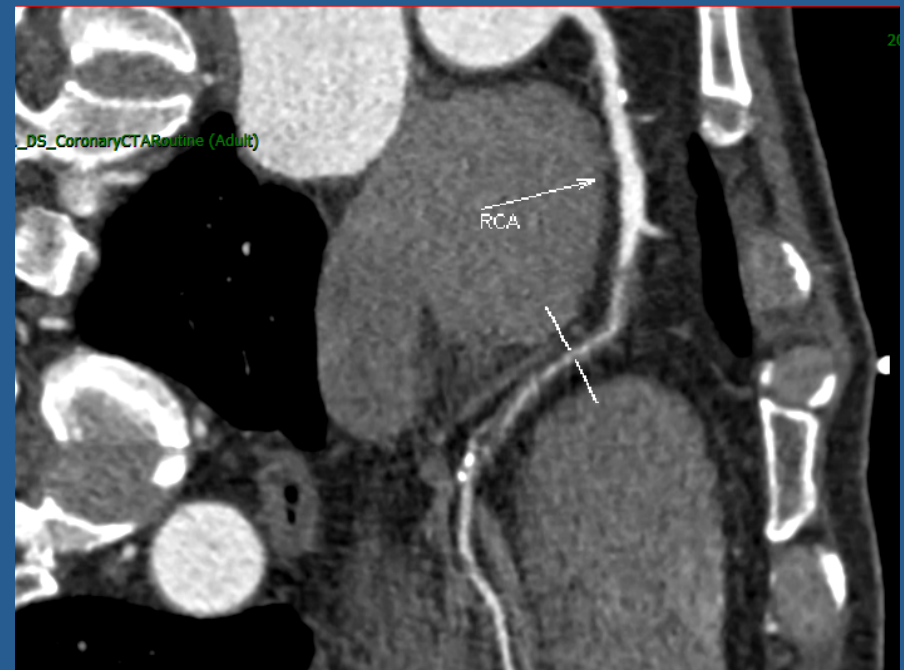
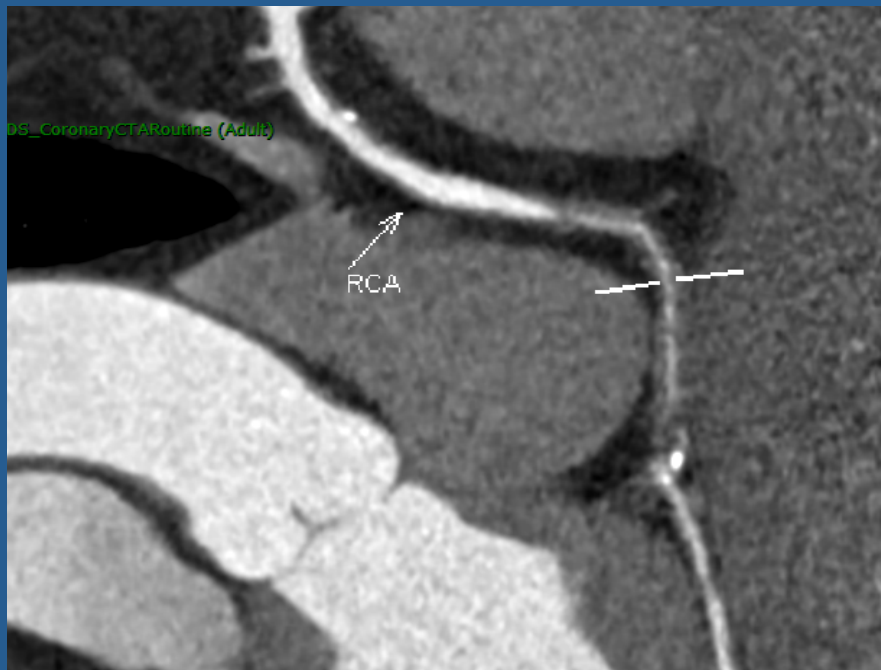
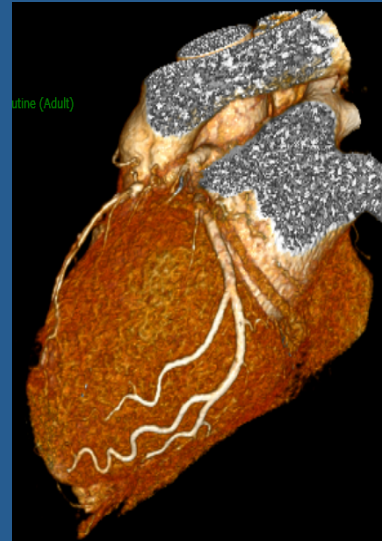
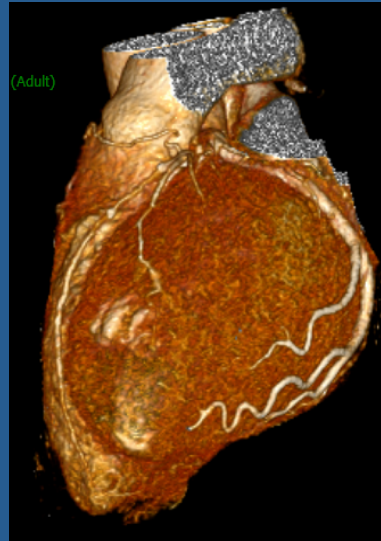
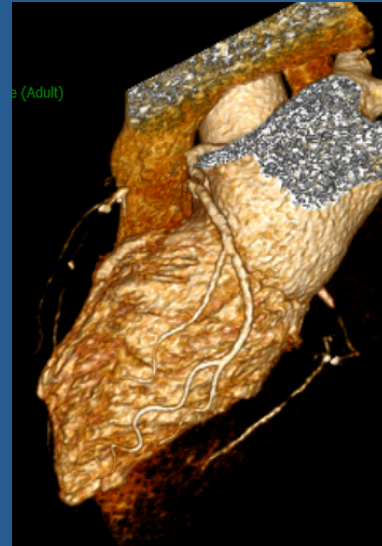
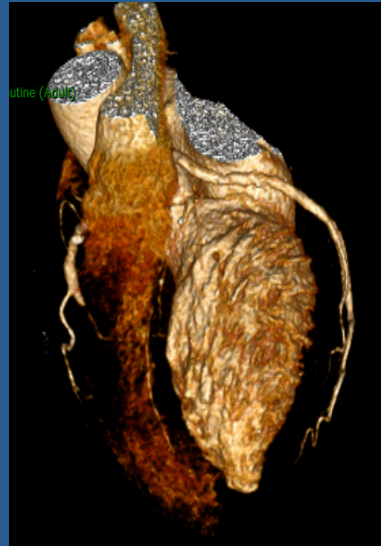


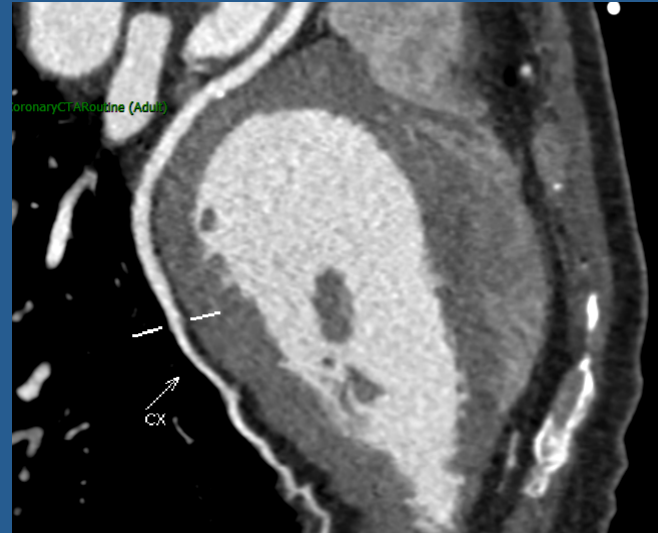
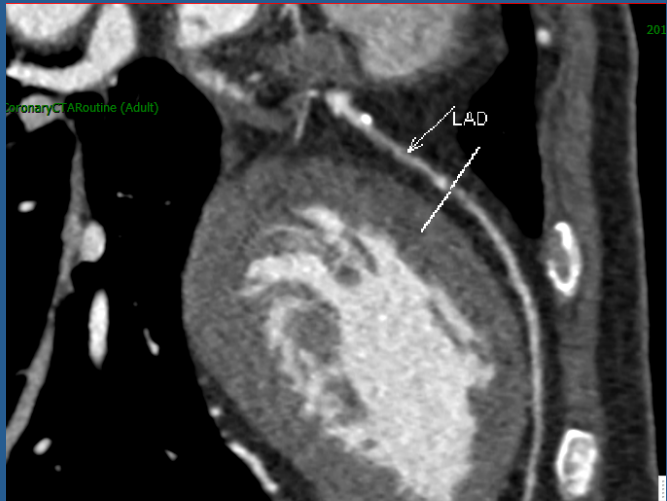
CTA-right system



CTA-left system



CTA-Left system



Catheterization Findings

- ❑ Chronic Total occlusion at mid-RCA
- ❑ Chronic Total occlusion at the ostium of the LAD
- ❑ No significant lesion was detected at LM, LCx.

Catheterization Findings



1/4/2013 17:38:29
C13096S
1
3
130/140

34.50 RAO
0.20 CRA