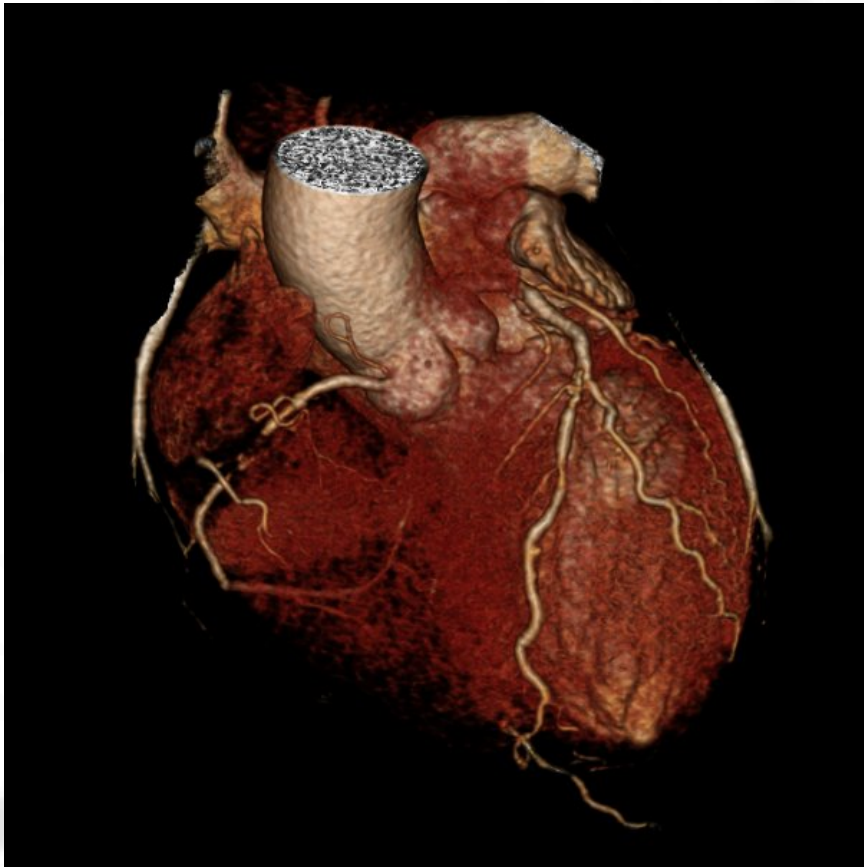
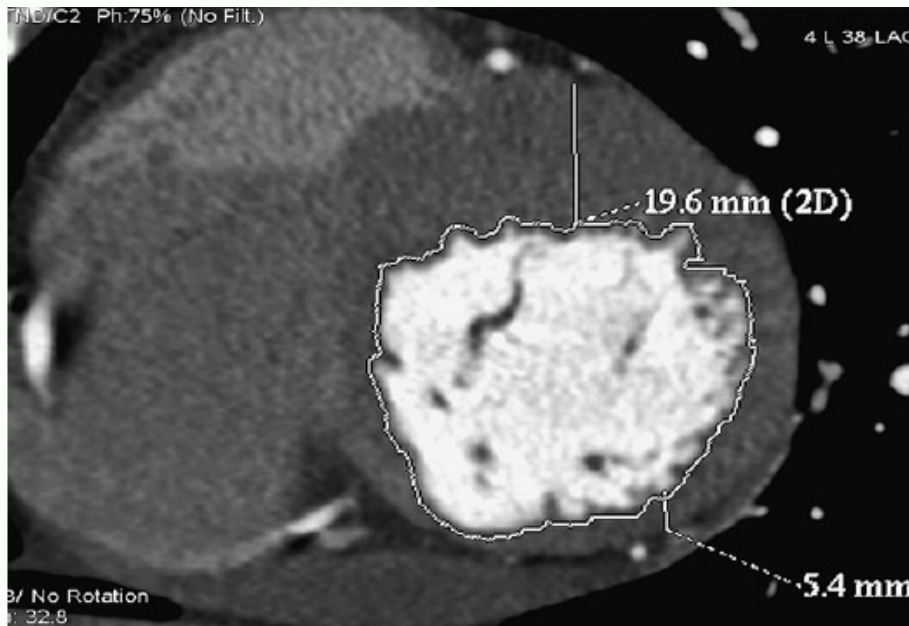
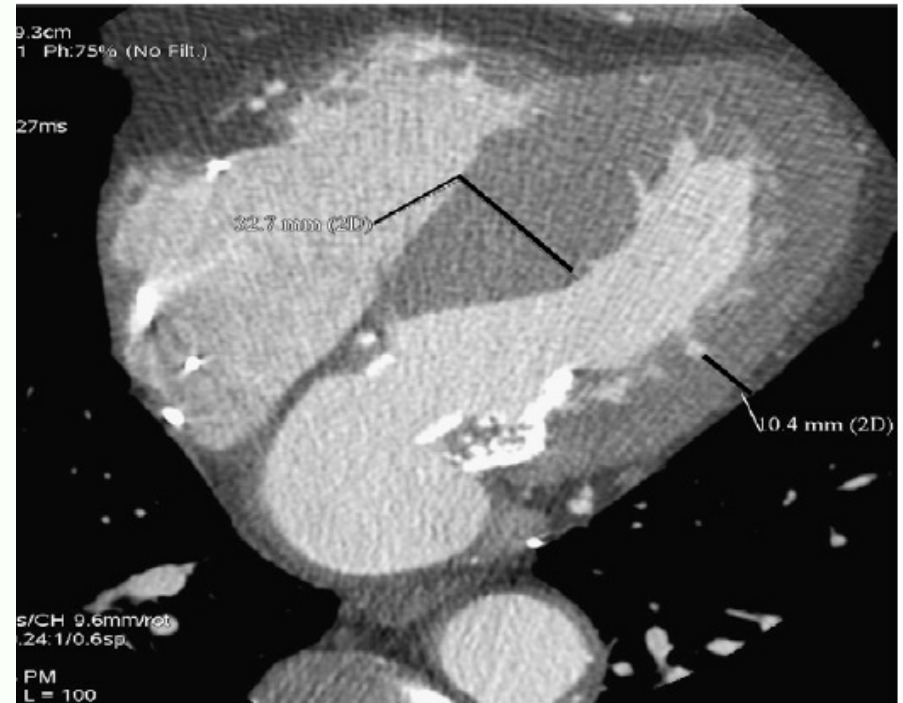
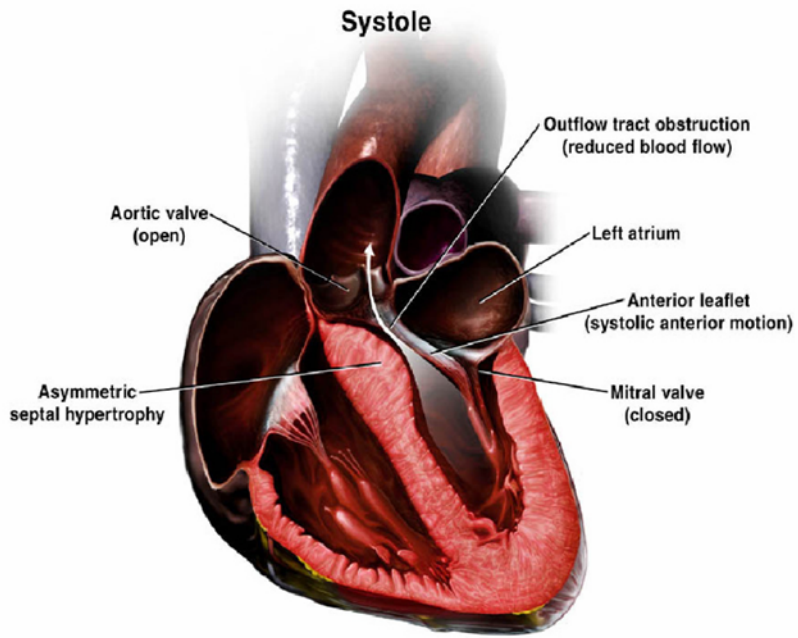


M/45 high intensity competitive player, severe HT, severe LVH, asymptomatic CCTA – severe TVD



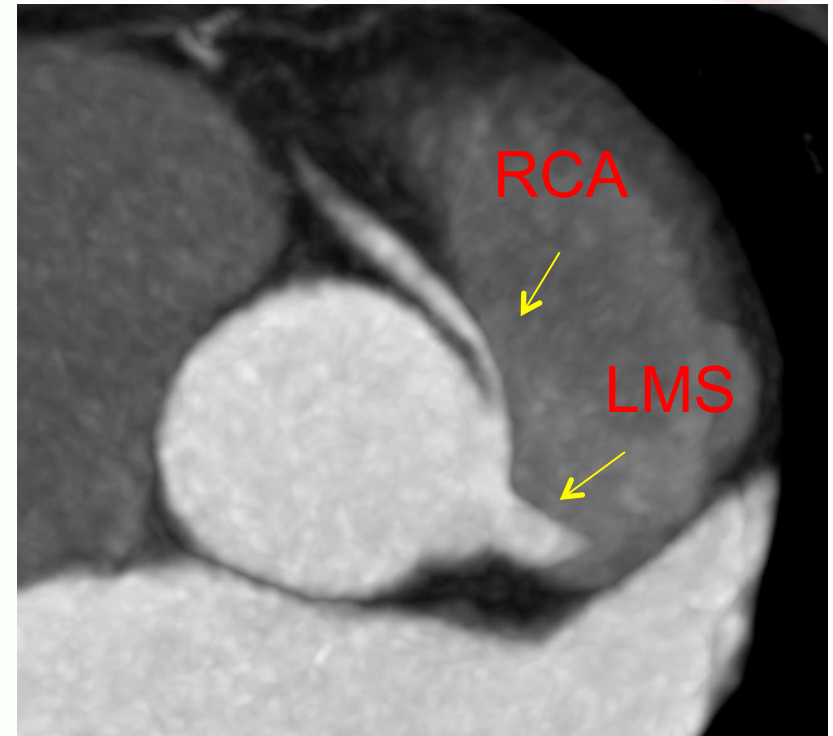
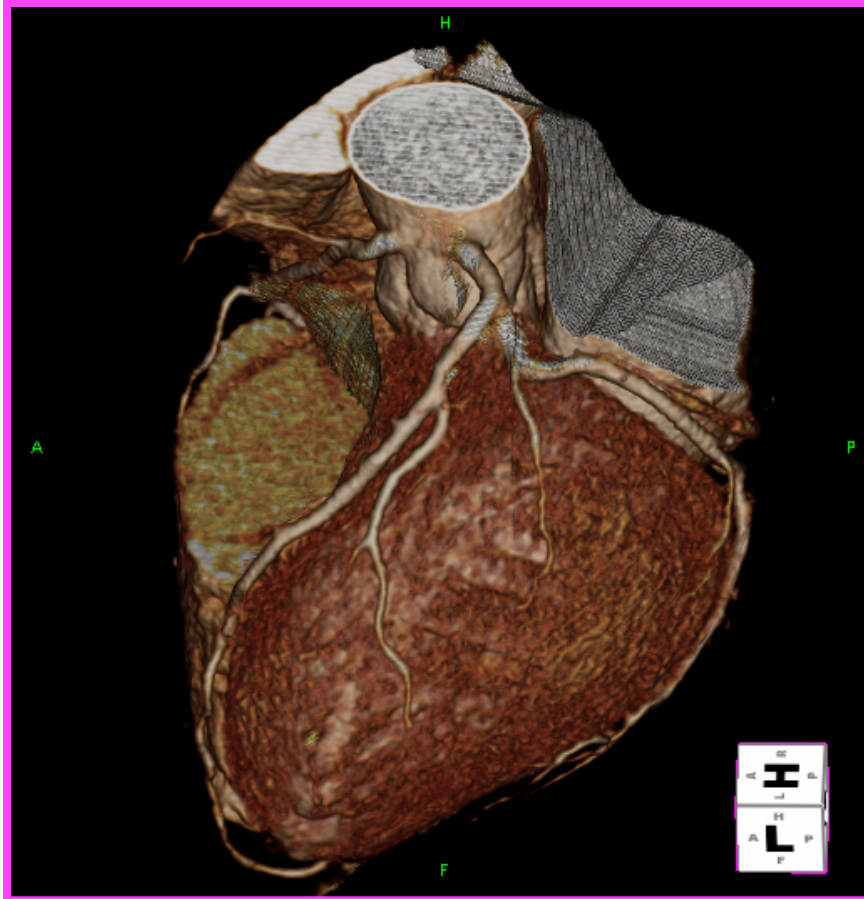
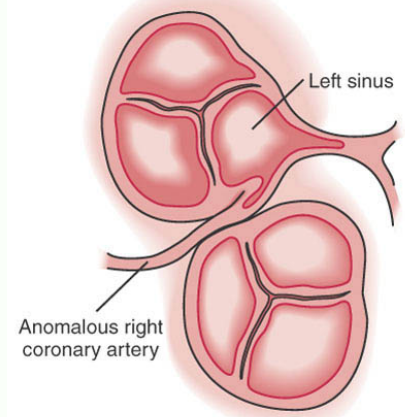


心肌肥厚症

Hypertrophic
Cardiomyopathy

冠狀動脈異常

Coronary Anomaly



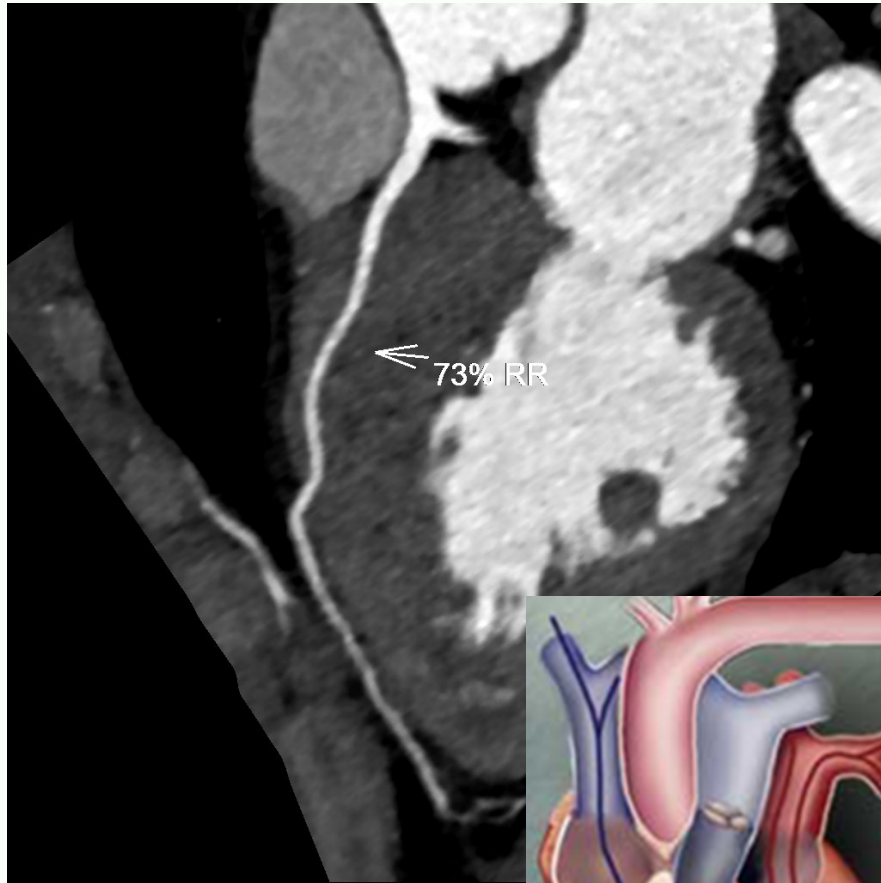
Anomalous RCA from Left Coronary Sinus



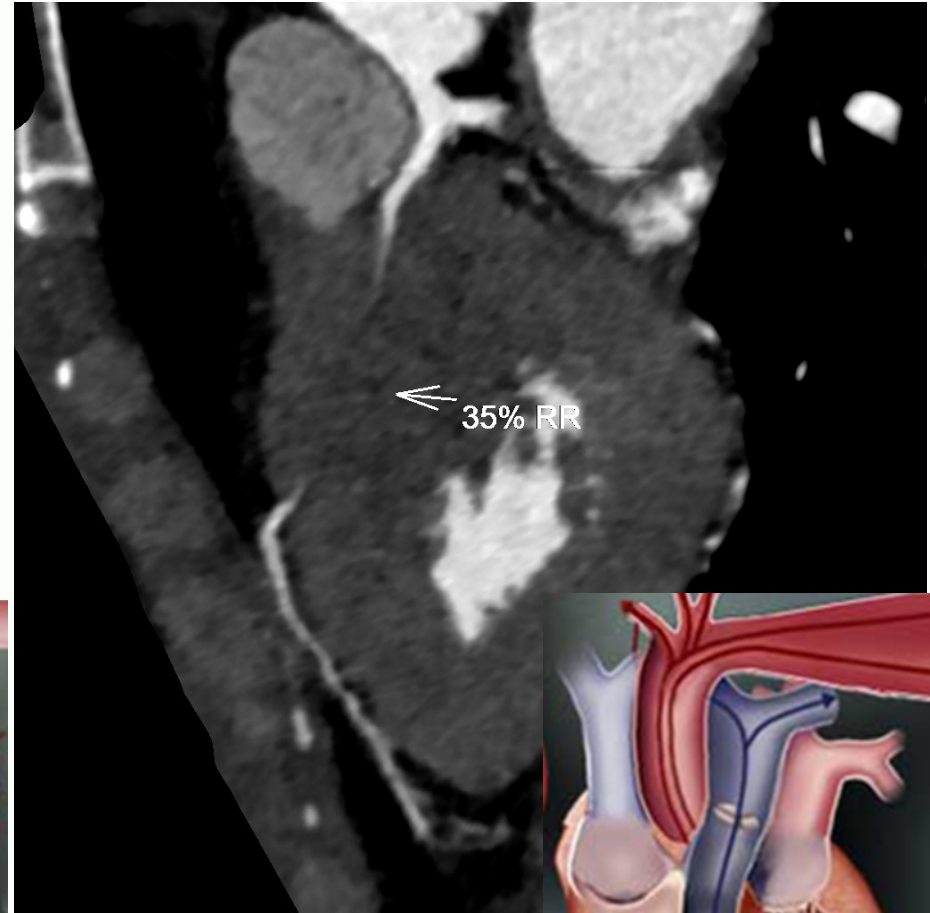
Deep Myocardial Bridging 心肌橋

(Depth >5 mm, Length >3cm)

35 yrs man collapse and arrested while jogging



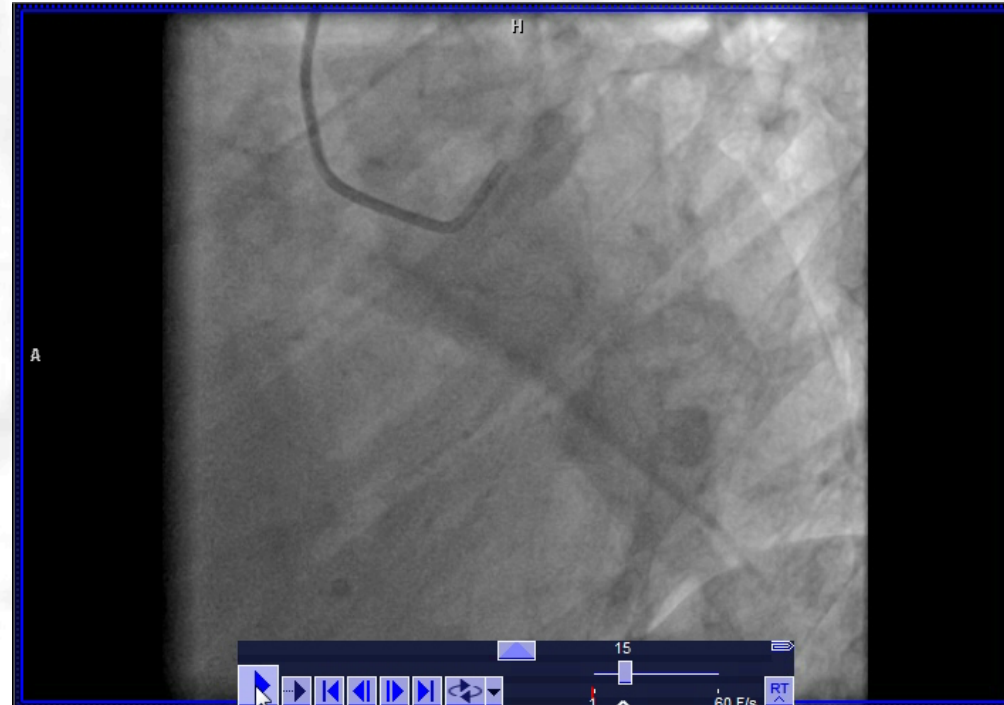
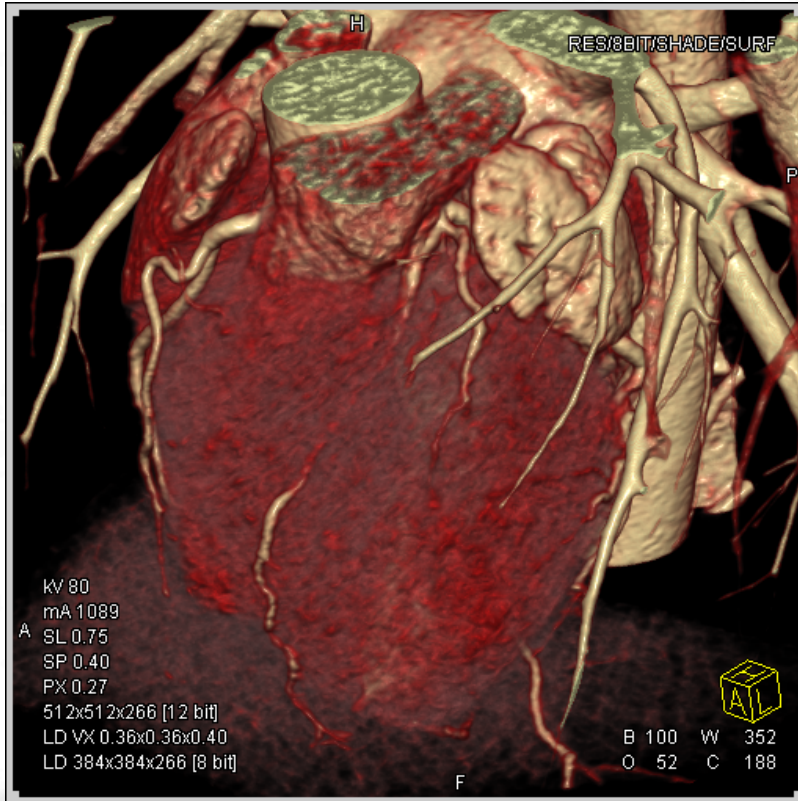
舒張



收縮



Deep Myocardial Bridging 心肌橋



Adenosine-Induced Stress Myocardial Perfusion Imaging Using Dual-Source Cardiac Computed Tomography

	CTP Stress Versus SPECT Stress	CTP Rest Versus SPECT Rest*
Per vascular territory	(n = 102) prevalence of stress perfusion defects = 0.37	(n = 99) prevalence of rest perfusion defects = 0.23
Sensitivity	0.84 (0.69–0.94)	0.78 (0.56–0.93)
Specificity	0.80 (0.68–0.89)	0.78 (0.67–0.86)
PPV	0.71 (0.56–0.84)	0.51 (0.34–0.69)
NPV	0.90 (0.79–0.96)	0.92 (0.83–0.97)
C-statistic	0.819	0.779

Values for sensitivity, specificity, PPV, and NPV presented with 95% confidence intervals.
*Includes 33 patients who completed the CT rest perfusion scan.
CTP – computed tomography perfusion; other abbreviations as in Table 3.

SCTP Similar Accuracy with SPECT

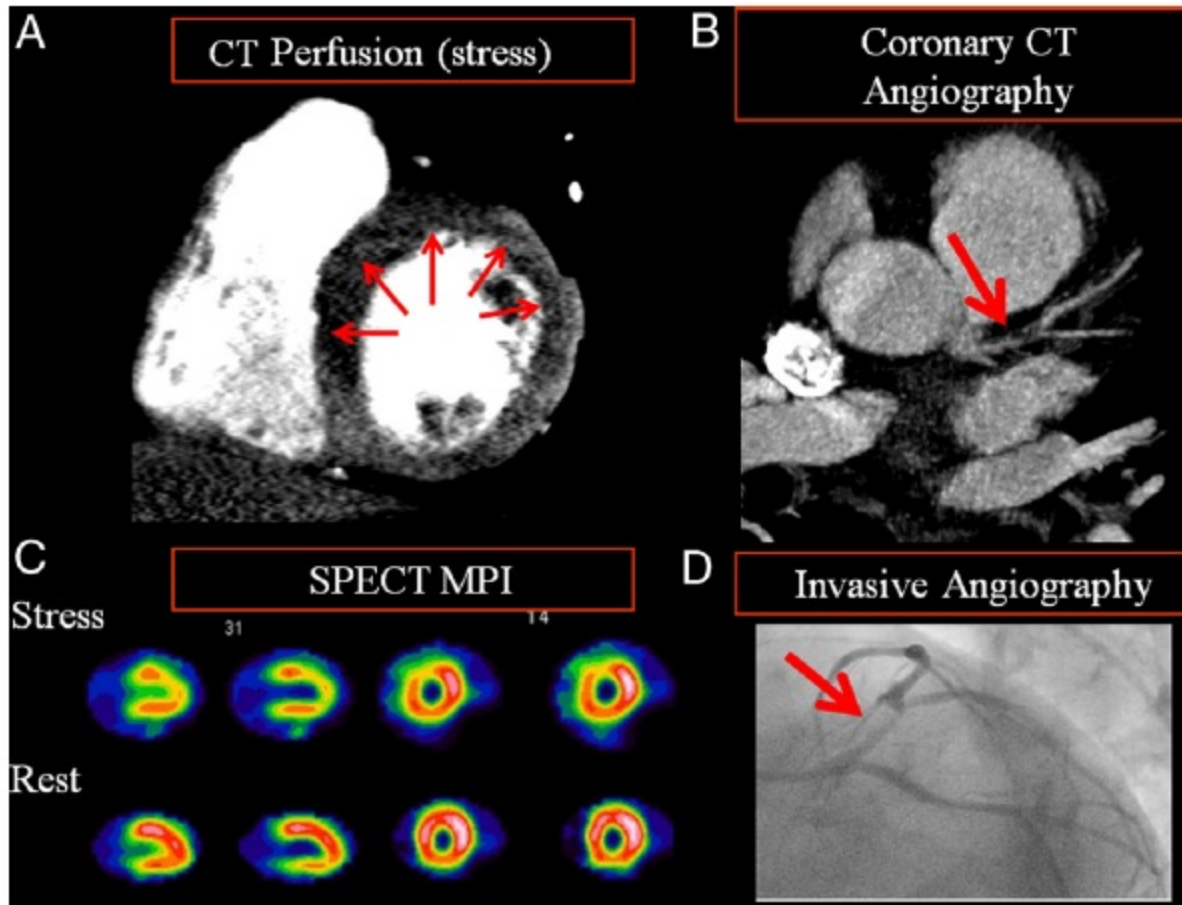


Figure 4 Example of Single-Vessel Disease Identified by All Modalities

A 59-year-old obese man with no prior cardiac history who presented with chest pain and dyspnea on exertion. A CT perfusion showed a large perfusion defect in the anteroseptal, anterior, and anterolateral walls **(A)**. **(B)** The CT angiography showed large noncalcified plaque in the proximal LAD; **(C)** SPECT MPI images with fully reversible defect throughout the mid and apical anterior wall. **(D)** Invasive angiography in the left anterior oblique caudal view showing severe stenosis in LAD before the takeoff of the first diagonal branch. LAD = left anterior descending; other abbreviations as in Figure 3.

DSCT Stress Myocardial Perfusion Imaging

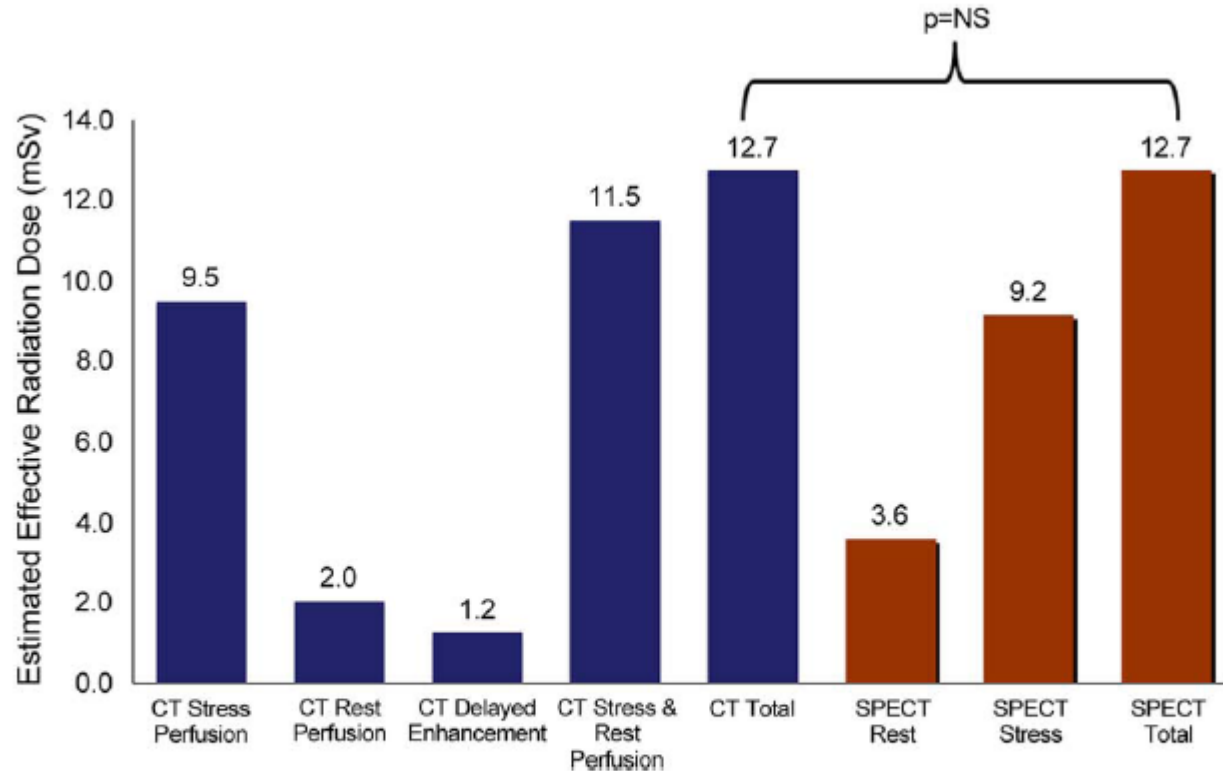


Figure 3 Radiation Exposure of Stress Cardiac CT Versus SPECT MPI

Estimated effective radiation dose in millisieverts (mSv) is shown for cardiac computed tomography (CT) (**blue bars**) and single-photon emission computed tomography (SPECT) myocardial perfusion imaging (MPI) (**red bars**). The total effective radiation dose was equivalent for the 2 modalities.

