

Table 4. Impact of morphological features on wiring success as observed by CTCA.

Findings on CTCA	Detected Group		Nondetected Group		p-Value
	Total	No. of Successes	Total	No. of Successes	
Vessel bending	30	17 (57%)	80	76 (95%)	< 0.0001
Vessel shrinkage, n	9	4 (44%)	101	89 (88%)	0.0005
Severe calcification, n	24	17 (71%)	86	76 (88%)	0.0356
Tapered stump, n	56	46 (82%)	54	47 (87%)	0.5542
Significant side branch, n	62	50 (81%)	48	43 (90%)	0.1984
In-stent occlusion, n	18	16 (89%)	92	77 (84%)	0.5772
Occlusion length \geq 20 mm, n	51	41 (80%)	59	52 (88%)	0.2625
Occlusion length \geq 30 mm, n	25	19 (76%)	85	74 (87%)	0.1787

CTCA = multislice computed tomographic coronary angiography

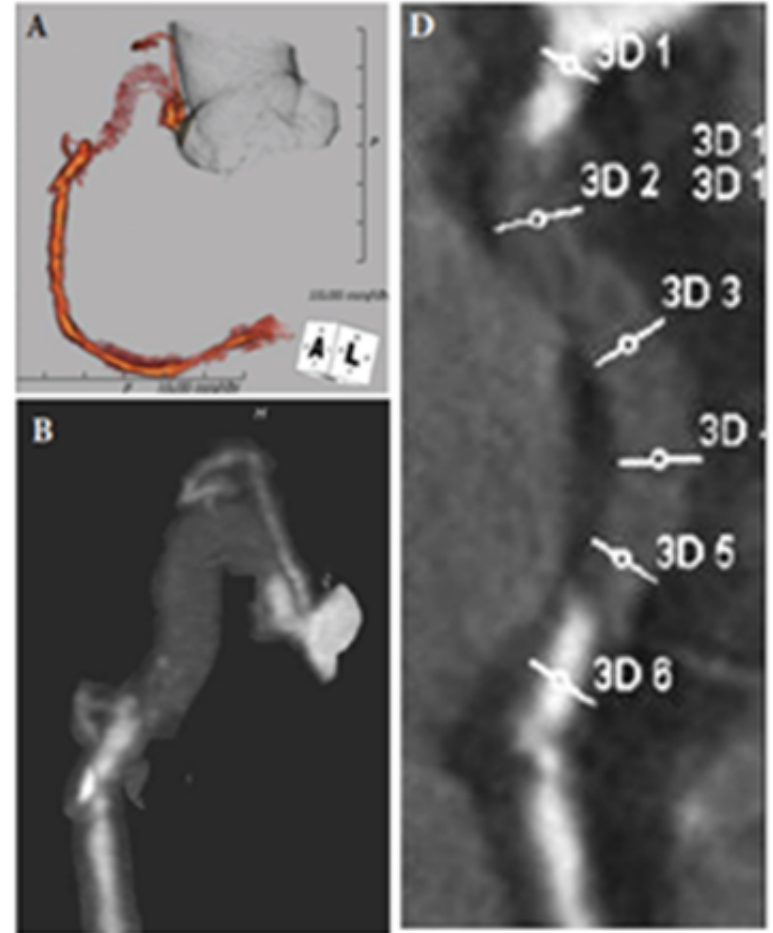
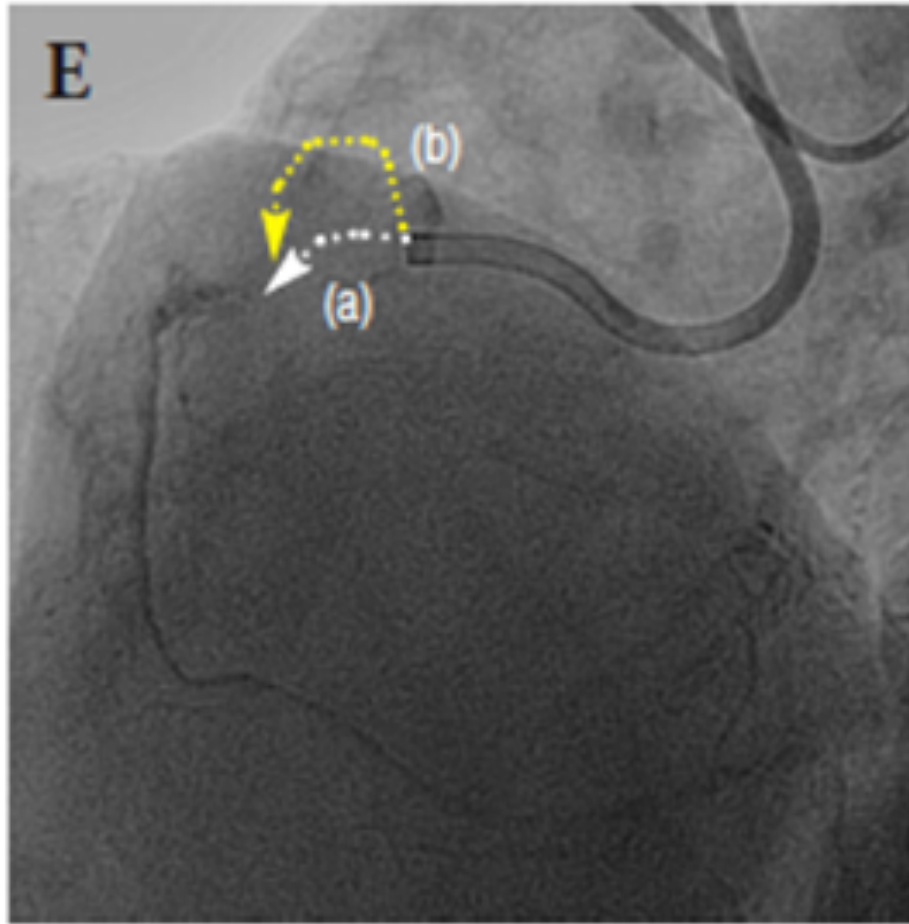
Table 5. Multivariate predictors of procedure failure in PCI for CTO.

	Odds Ratio	p-Value	95% CI	Likelihood Ratio Test p-Value
Vessel bending, n	20.62	< 0.0001	4.72–90.09	< 0.0001
Vessel shrinkage, n	10.76	0.0078	1.87–62.05	0.0057
Severe calcification, n	4.54	0.0342	1.12–18.38	0.0307

CI = confidence interval. The likelihood ratio test for the whole model was < 0.0001.



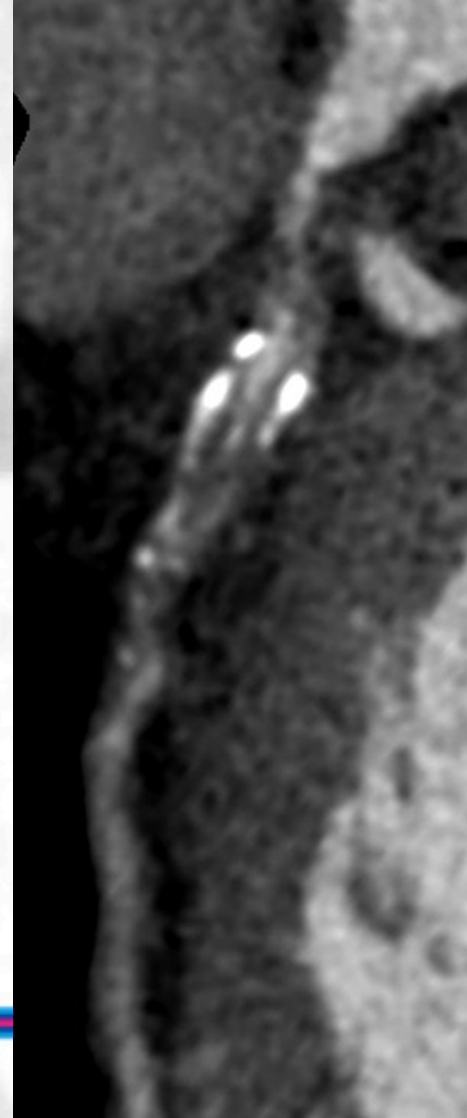
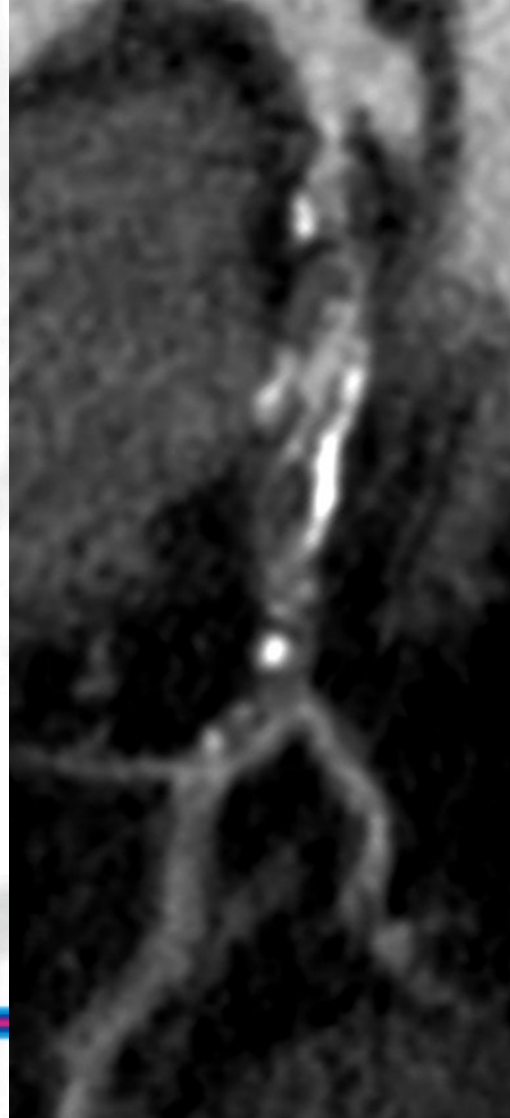
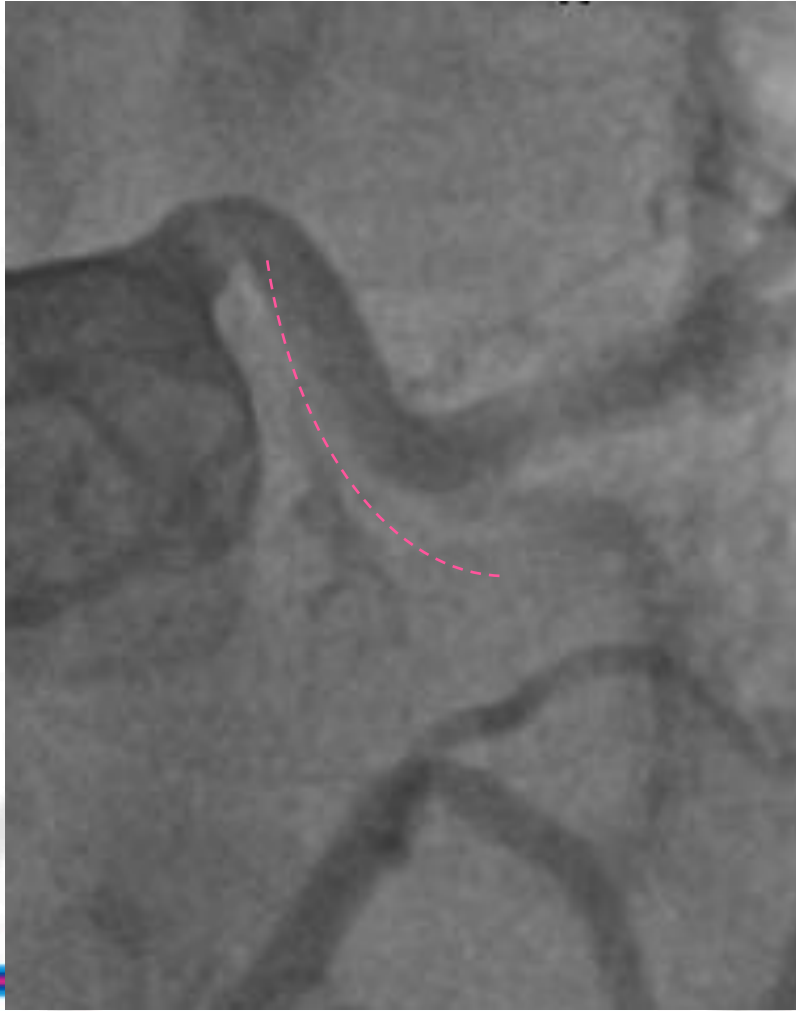
U-shape bend, 35 mm length, 7.1 mm diameter



PRO-CARDIO 心滙



Failed CTO 2X (ante-grade + retro-grade), 30mm length
Peripheral Calcium, positive remodeling,
linear intra-plaque enhancement



Left Radial Approach, Sheathless guide, Sion over Cosair

After wiring to D1



Post-stenting



PRO-CARDIO 心滙