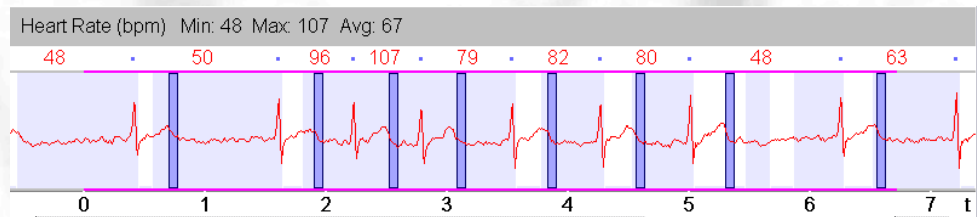


**Table 1****Estimates of Effective Doses for Selected Cardiac Imaging Procedures (in mSv)**

Myocardial perfusion imaging study with ejection fraction		15.6
Diagnostic coronary angiography		7.0
Percutaneous coronary intervention		15.0
Cardiac blood pool imaging, gated equilibrium; planar, single study at rest or stress		7.8
Cardiac computed tomography (without contrast, for assessment of coronary calcium)		3.0
Cardiac computed tomography (with contrast, for assessment of coronary arteries, without assessment for coronary calcium)	64 slices	16.0
Pacemaker insertion		1.5
Comprehensive electrophysiological evaluation		5.7



# 心房顫動

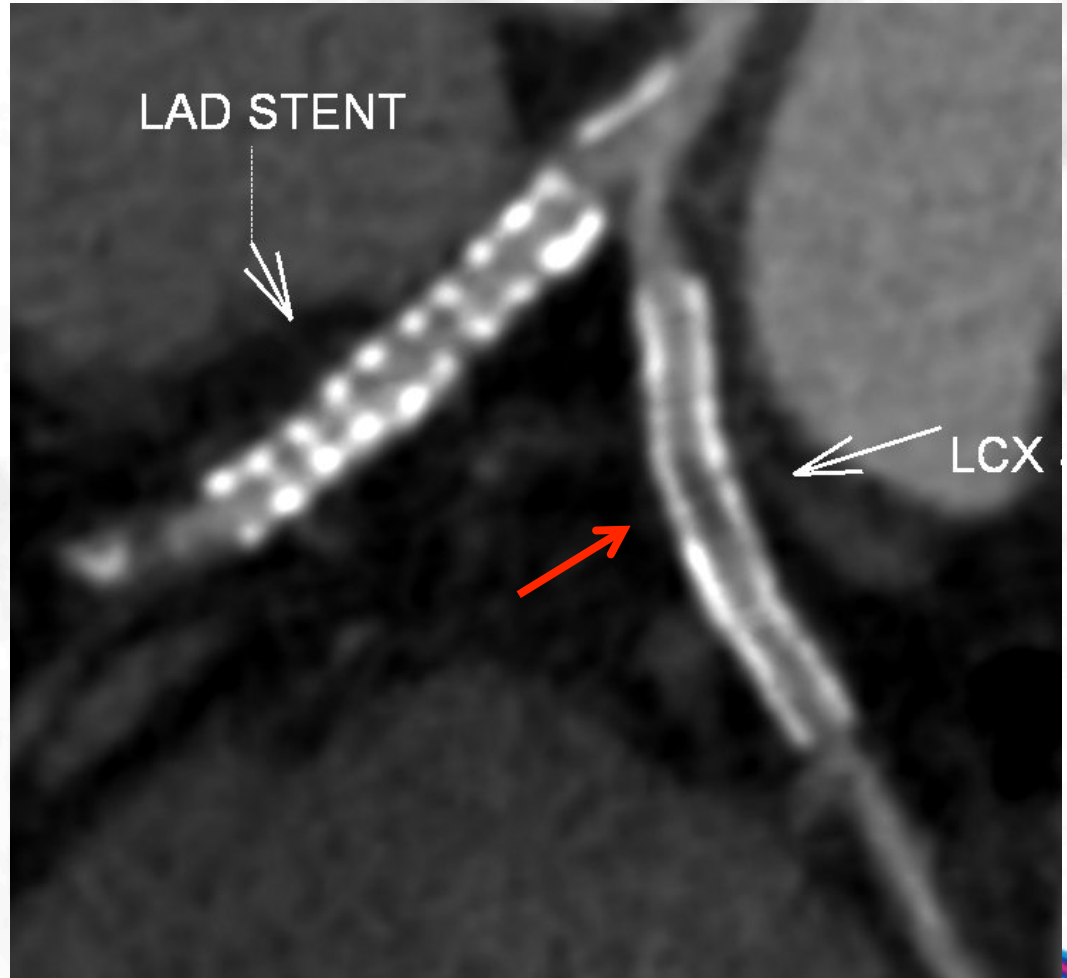


PRO-CARDIO 心滙



# In-Stent Restenosis in LCX

## Post-PCI Assessment



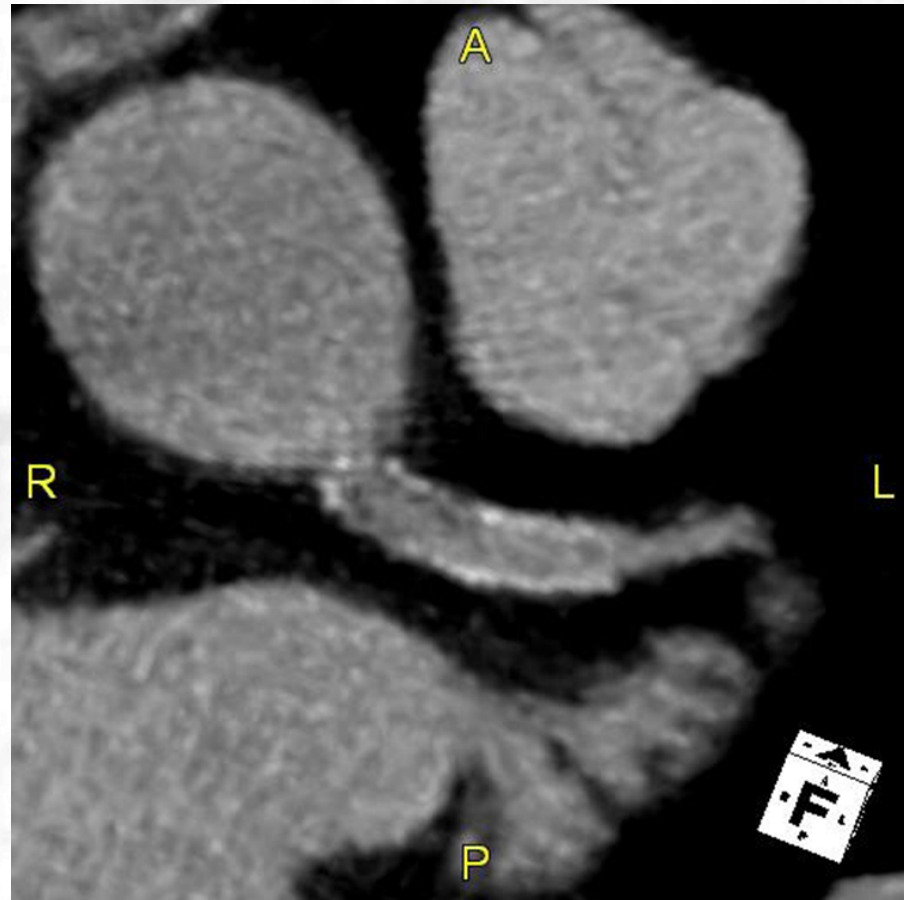
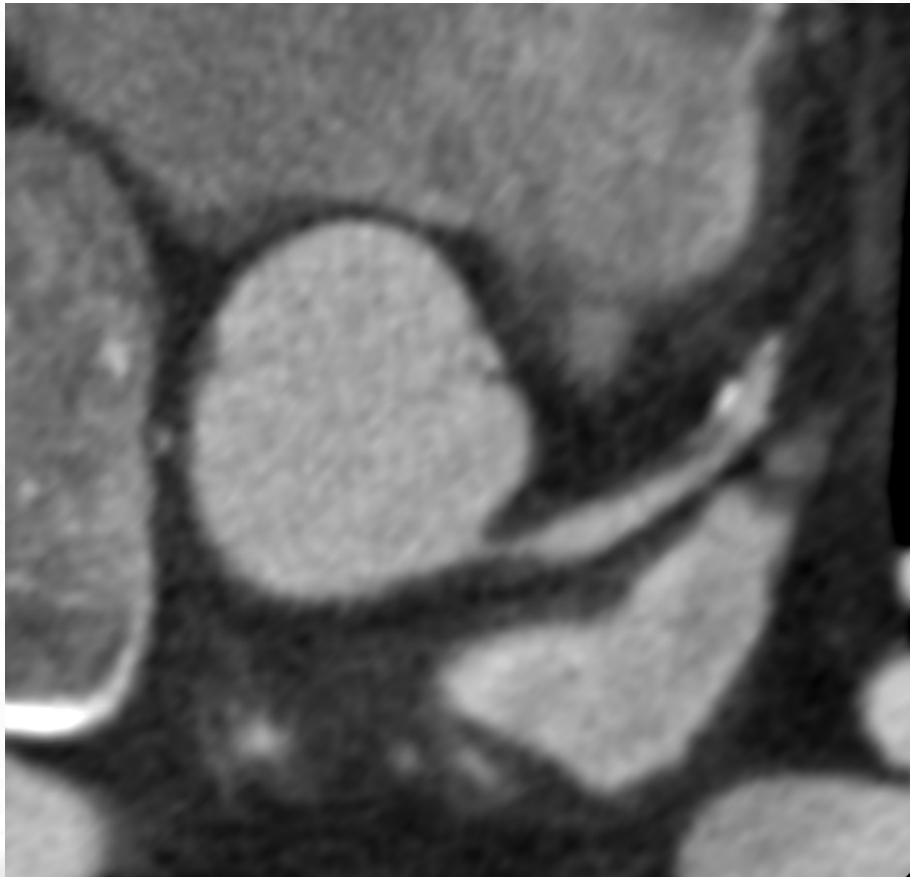
PRO-CARDIO 心滙

High resolution kernel B46

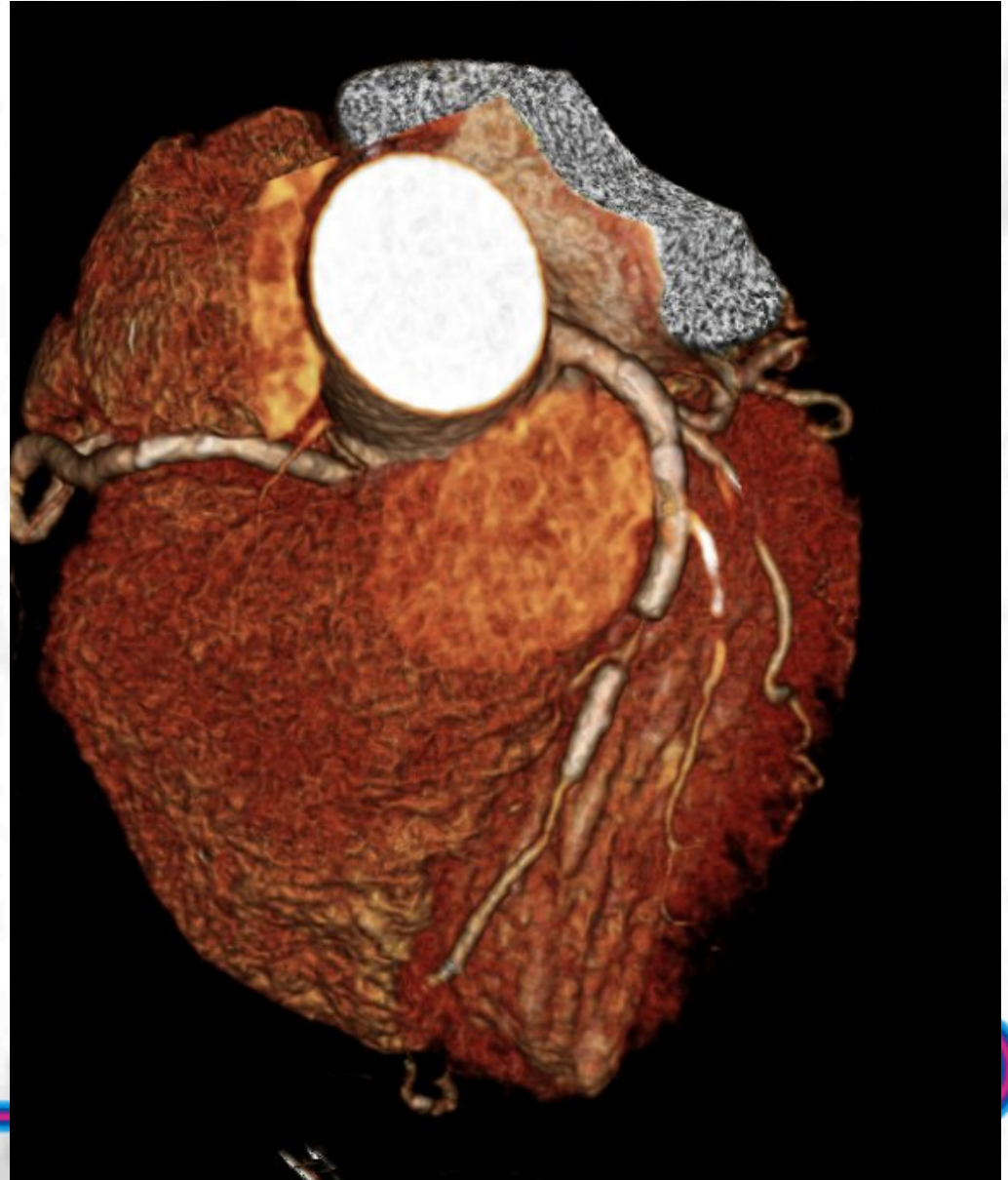
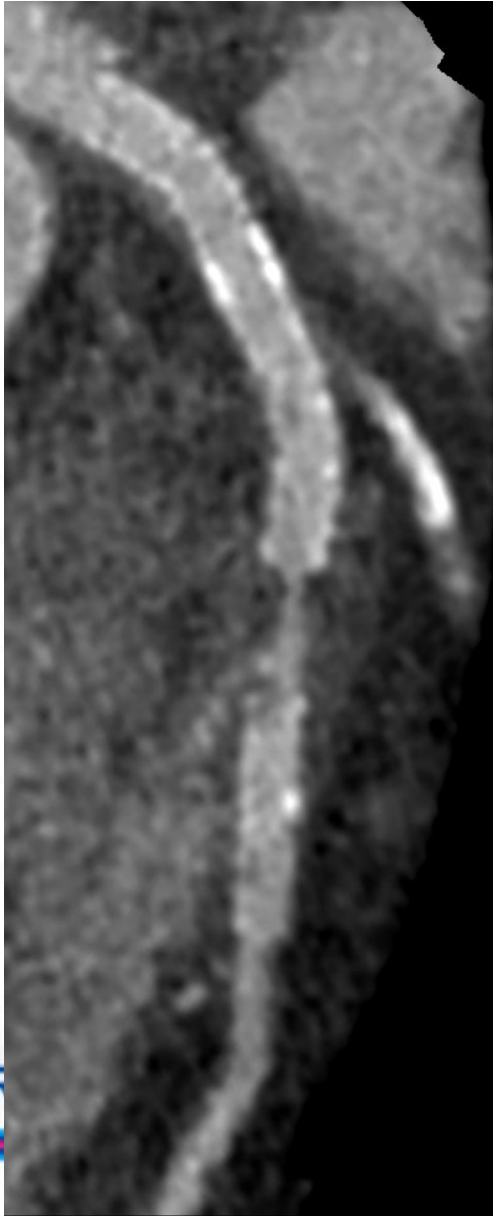
B26 kernel



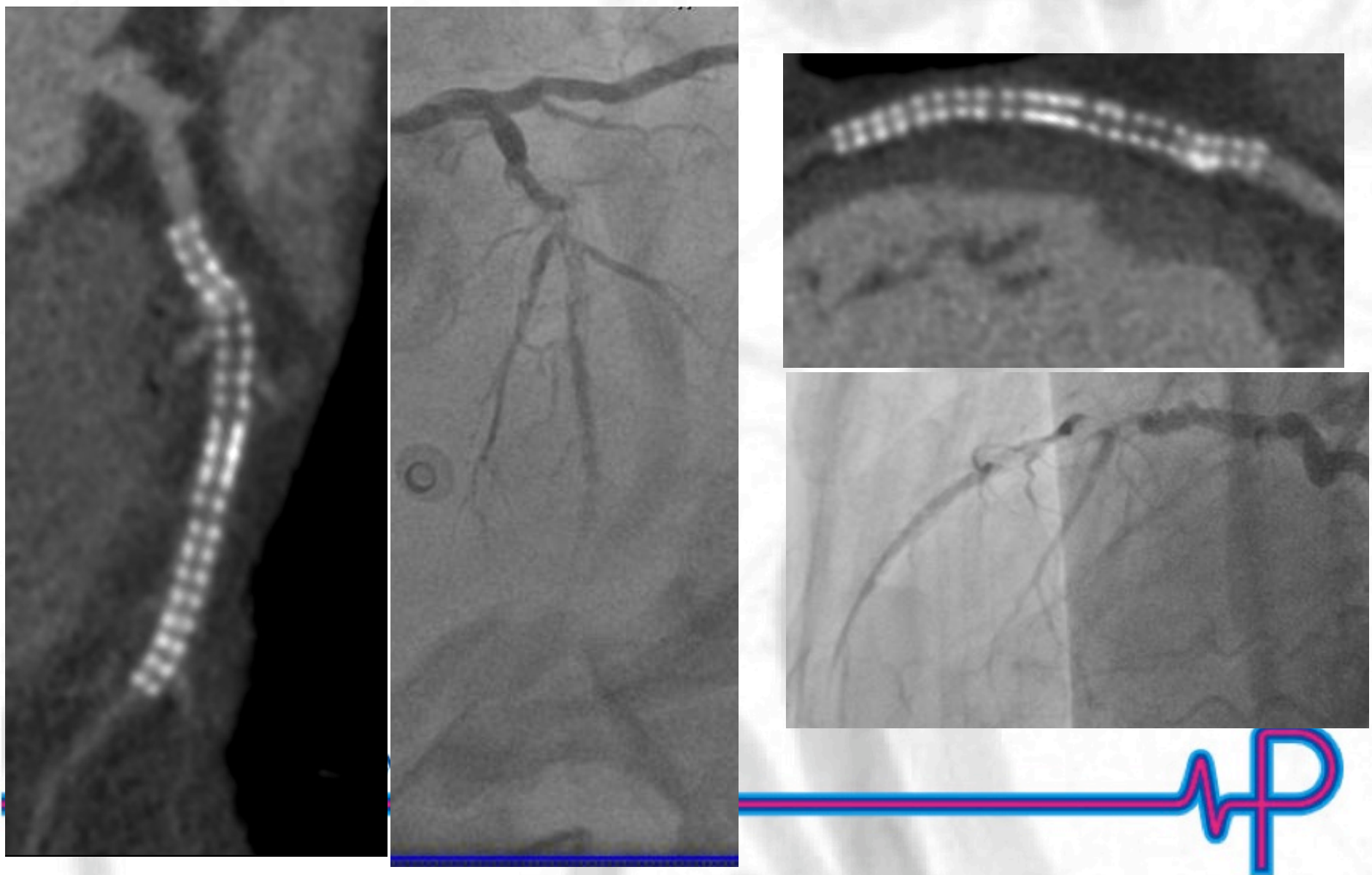
# LMS STENTING



# Restenosis between stents

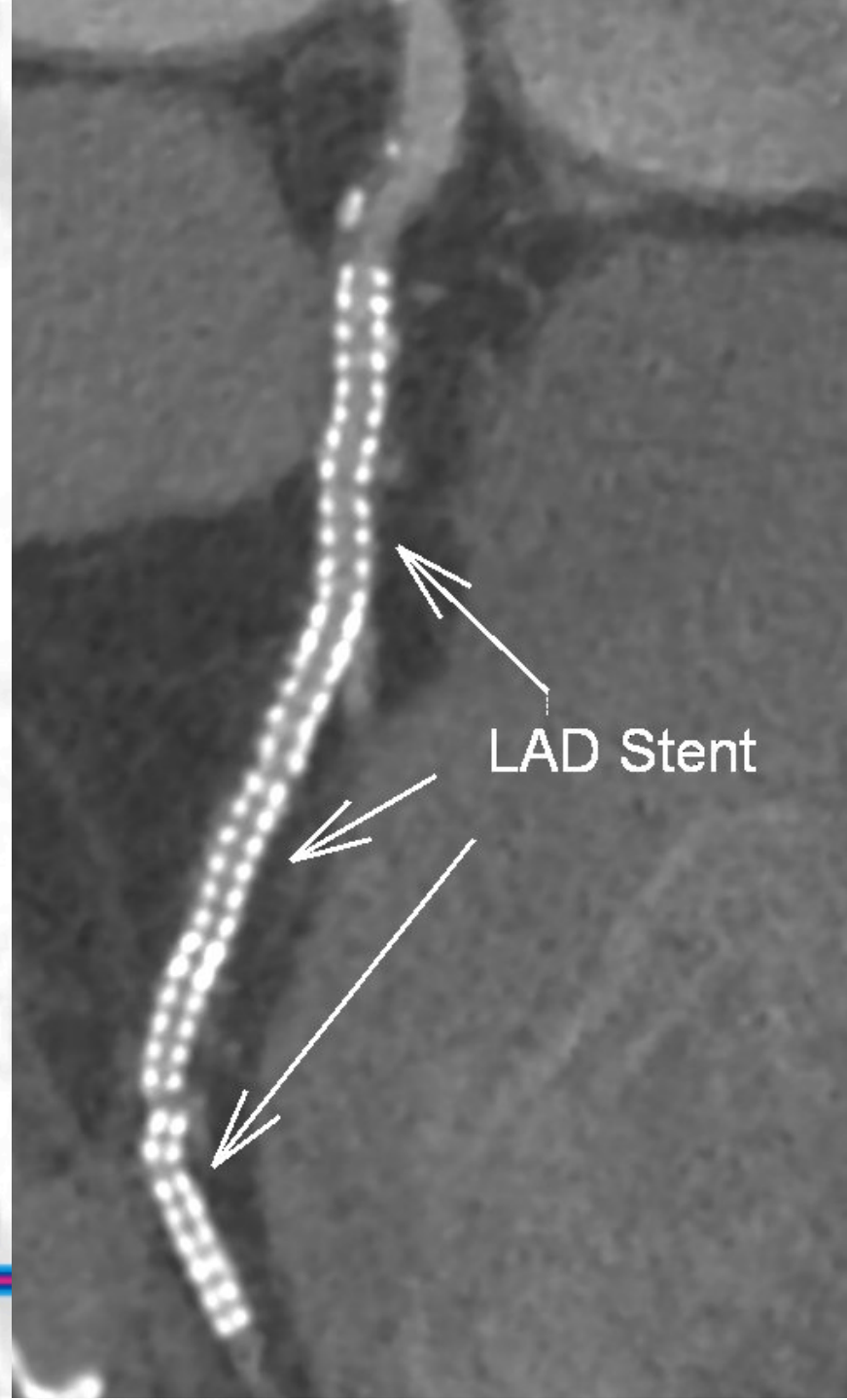


# AMI 10 days after discontinuation of plavix, 2.5 years after Cypher Stent implantation



# STENT FRACTURE

PRO-CARDIO 心滙



# Platinum Stents

